



TOWARDS SEACHANGE...

WHY WE NEED A 'SEACHANGE'!

The need for systems change across coastal-marine landscapes is so urgent and yet hard to achieve. A major reason for the failure to achieve lasting change is that few change agents acknowledge the interlinked and multisectoral challenges that are embedded within the landscapes of complex, uncertain systems. A significant related challenge for intervention in coastal domains is the lack of inclusive conservation and development, both in policy and practice. Holistic intersectoral interventions, however, are critical for the health and sustainability of India's coastal spaces and communities. That is why Dakshin believes that we need a SeaChange for 'systems change'!

WHAT IS SEACHANGE?

SeaChange is Dakshin's intersectoral approach to intervention for system-level change. It aims to address complex sustainability crises faced by small-scale fisher (SSF) and other local communities. These include fish-catch declines, climate change, biocultural diversity loss and conservation conflict. SeaChange aims to bring about systemic change through interlinking interventions in the domains of conservation, fisheries, governance, health, and livelihoods. SeaChange is based on a) systems-thinking, b) prioritises landscapes as the units of intervention, c) is based on intuitive learning, and d) is scalable but contextually nuanced.

The SeaChange model involves collaborating with small-scale fisher (SSF) and other local communities across India, with relevant government bodies, experts and relevant industry actors. These collaborations lead to customised interventions that meet the key SeaChange criteria. SeaChange involves diverse stakeholders within local communities across landscapes, resulting in inclusive solutions that are implemented through collective action and partnerships at varied scales. The flexible and grounded nature of this model puts philanthropic resources to better use and makes NGOs better-placed to support communities from shocks resulting from complex challenges, while building resilience to overcome such problems through long-term embedded engagement.

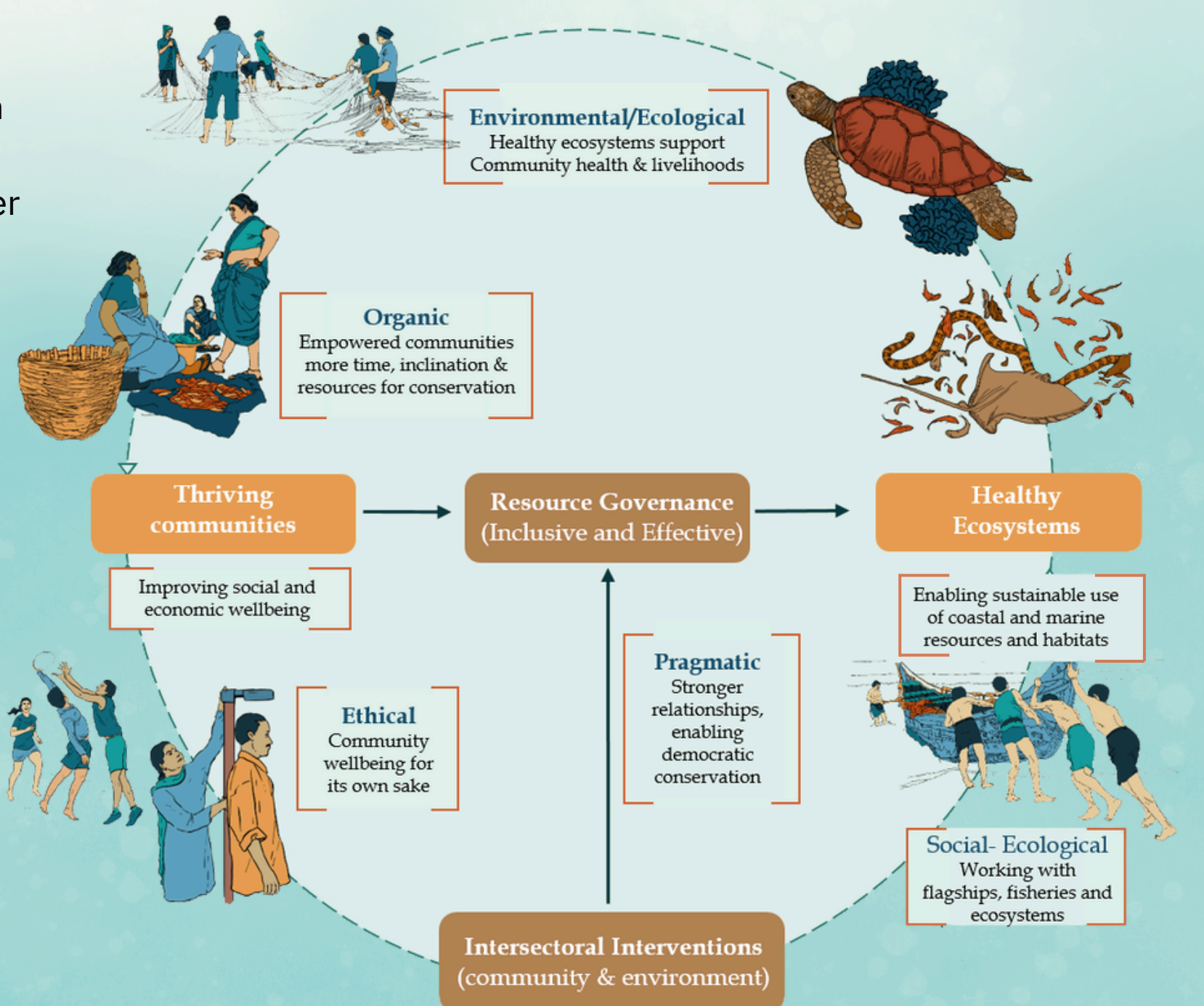


Illustration by Apna Kuruvilla and Ujan Dutta. Design by Anu Priya Babu.



Scan the QR code to access our outreach materials!

